

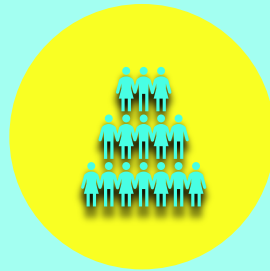
Team Structure: Broadening your Research Range by Diversifying your Team

**Pamela Farthing RN BA MSc PhD(c)
Elsie Duff RN NP BScN MEd PhD
Tasha Maddison MLIS**

Outline



RESEARCH FOCUS



TEAM COMPOSITION




APPLIED RESEARCH

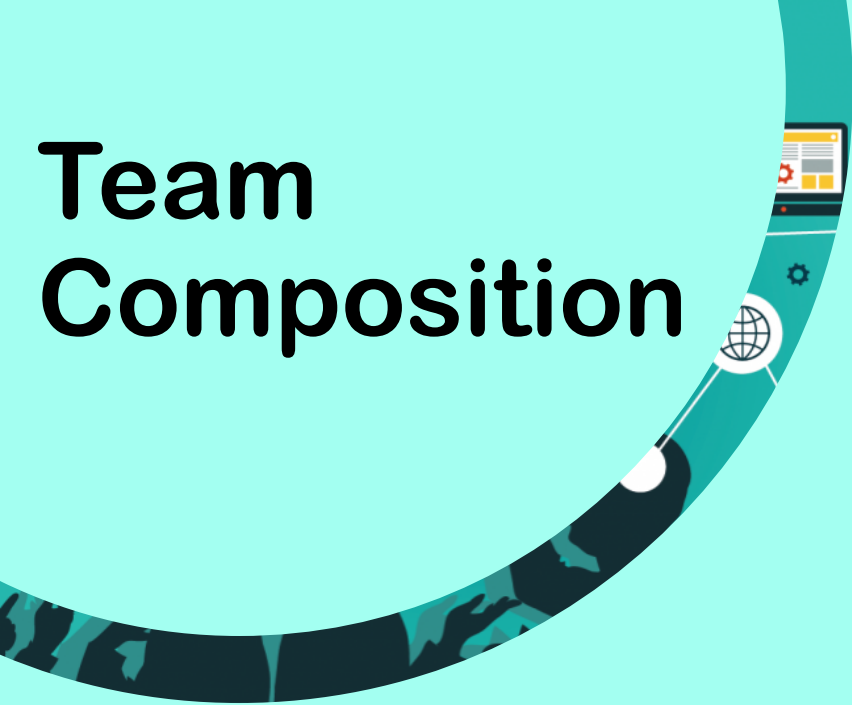


**INTERDISCIPLINARY
INVOLVEMENT**

Research Focus

A decorative curved graphic on the left side of the slide. It features a teal arc with a dark blue and teal camouflage pattern. Along the curve, there are several icons: a laptop with a gear, a globe, and a satellite dish.

- Young Adults with Diabetes
- Initial focus - technology integration
- Next phase - challenges associated with pregnancy and breastfeeding for young mothers who have diabetes



Team Composition

- Nursing faculty from two post secondary institutions
- Pharmacist
- Diabetes Nurse Clinician
- Patient members with Diabetes
- Librarian





Teamwork Clip





Team

Interdisciplinary


- many perspectives to develop research question(s)
- synthesis of knowledge management and task dissemination
- novice researchers gain knowledge

Applied Research



- existing technology/solutions and applies them in innovative ways in order to solve problems/challenges
- assesses a need, proves a concept, and tests new products to refine them for market
- access/apply for funding

Research Supports



- Office of Applied Research (OARI)
- Centre for Health Research, Improvement and Scholarship (CHRIS)

Challenges

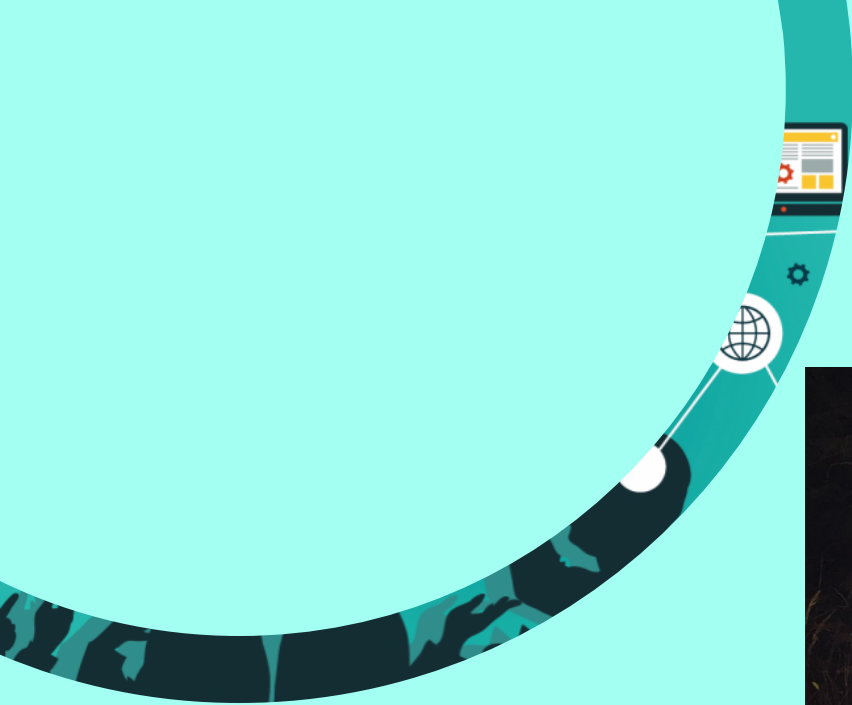
- competing priorities, demands on time
- resistance to be on teams
- lack of support
- Canadian Common CV



Benefits

A decorative curved graphic on the left side of the slide. It features a teal arc with a dark blue and teal camouflage pattern at its base. Along the curve, there are several white icons: a globe, a gear, a laptop, and a document with a gear icon.

- team structure
- same priorities on deadlines
- presenting at conferences
- contributes to meeting annual faculty assessment indicators



Know thyself.

Socrates

quote fancy



Lynda.com

- online learning platform
- videos
- self directed learning
- develop research skills



References



Ho, Ben (2015, Oct 5). *Parks and Recreation Compromise* [Video file]. Retrieved from <https://www.youtube.com/watch?v=emflRTPmKxA>

Lynda.com (2019). *About us*. Retrieved from <https://www.lynda.com/aboutus/>

Saskatchewan Polytechnic (2019). Applied Research and Innovation. Retrieved from <https://saskpolytech.ca/about/applied-research-and-innovation/>

Saskatchewan Polytechnic (2019). Centre for Health, Research, Improvement and Scholarship (CHRIS). Retrieved from <https://saskpolytech.ca/about/school-of-nursing/CHRIS/>

Tenor, Inc. (2019). *Duhh* [gif]. Retrieved from <https://tenor.com/view/duh-reaction-full-house-gif-3468348>

The Office (2017, Oct 26). The Office – Dream Team Episode [Video file]. Retrieved from <https://www.youtube.com/watch?v=jhPN8l8Z7IU>

Quote fancy (2019). *Know thyself* [image]. Retrieved from <https://quotefancy.com/quote/11443/Socrates-Know-thyself>